



44th ANNUAL MEETING
October 15-17, 2006
Hotel Grand Pacific
463 Belleville Street
Victoria, British Columbia, Canada

REGISTRATION

NAME : \_\_\_\_\_
ADDRESS : \_\_\_\_\_
CITY : \_\_\_\_\_ COUNTRY : \_\_\_\_\_
ZIP : \_\_\_\_\_ EMAIL : \_\_\_\_\_
PHONE : \_\_\_\_\_ FAX : \_\_\_\_\_

REGISTRATION FEES\*

BEFORE OR ON September 15, 2006
Members 225 US \$ [ ] Students 125 US \$ [ ]
Non-Members 300 US \$ [ ]
AFTER September 15, 2006
Members 325 US \$ [ ] Students 175 US \$ [ ]
Non-Members 400 US \$ [ ]
Total \$ \_\_\_\_\_

\*The registration fees include meeting space and equipment, a reception on Sunday evening, coffee breaks twice a day, in addition to breakfast and lunch each day. Member registration is available ONLY to members who are not delinquent in their membership dues.

FOR STUDENT: Name of University or College \_\_\_\_\_
• Registrant is a full time student in (department) \_\_\_\_\_
• Signature of Department Chair \_\_\_\_\_
• Name of Department Chair \_\_\_\_\_

## MEMBERSHIP

Annual Membership Fee \$100 US  Associate Member \$50 US

Total \$\_\_\_\_\_

If you have not paid your 2006 membership dues, the membership payment you make now will be credited for 2006 and you will **receive** member registration rates. If you have paid your 2006 membership fee, the payment you make now will be credited for 2007. Dues notices for persons who have not paid membership dues for 2007 will be sent via email after the 2006 conference.

I am not currently a member but would like to be contacted by the membership committee.

## PAYMENT

TOTAL OF ALL PAYMENTS Grand Total \_\_\_\_\_\$

\_\_\_\_\_ Check Enclosed

Credit Card (Visa, MasterCard only)

**Credit Card charges will appear on your statement from Executive Administrative Services, Inc., the Academy's management firm.**

Name on card \_\_\_\_\_

Street address and postal code \_\_\_\_\_

Account # \_\_\_\_\_ Expiration date \_\_\_\_\_

Card authorization number (see back of card) \_\_\_\_\_

Payable to the **Academy of Aphasia**

**MAIL TO :** Academy of Aphasia  
PO Box 26532  
Minneapolis, MN 55426 USA

**FAX TO:** 952-920-6098 (Credit card only)

**EMAIL TO:** [contact@academyofaphasia.org](mailto:contact@academyofaphasia.org) (Credit card only)

## OTHER INFORMATION

# 44<sup>TH</sup> ANNUAL MEETING OF THE ACADEMY OF APHASIA VICTORIA, BRITISH COLUMBIA CANADA OCTOBER 15-17, 2006

### Venue

The Academy of Aphasia conference will be held at the *Hotel Grand Pacific* in beautiful Victoria, British Columbia. The *Hotel Grand Pacific* is located near the picturesque inner harbour at 463 Belleville Street.



**Hotel Grand Pacific**  
*(Victoria's Inner Harbour)*

### Victoria British Columbia Canada

Victoria, British Columbia is always in season! Victoria has the mildest climate in Canada, and is a place so green all year that flowers fall out of the sky and even the lamp posts bloom. It is no wonder that it is called The Garden City! The wild beauty of the Pacific coast and the adventure of the great outdoors are within the city limits and ocean and mountain vistas will follow you wherever you go.

Victoria remembers its colourful history with First Nations totem poles, heritage architecture and afternoon tea, and bustles with the energy of a university town, having the University of Victoria, Canada within its limits. Shop windows are full of British imports, Native art and the latest trends. Restaurants and cafés serve the freshest cuisine. The harbour is alive with the romance of an era when tall ships moored alongside the wharf and evenings glitter as lights twinkle and cast their magic from atop the landmark British Columbia Legislative Buildings.

The Garden City is a year-round tourism destination that offers a friendly, safe haven for all visitors. Getting here is very easy, and, once here, you will feel a million miles away. With a clean environment and charming ambience, it is no surprise that Victoria, BC is one of the world's favourite destinations.

For additional information about Victoria or Vancouver Island, please visit our official regional websites: [www.tourismvictoria.com](http://www.tourismvictoria.com) and [Tourism Vancouver Island](http://Tourism Vancouver Island).

## Attractions



*Beacon Hill Park (10-15 min walk)*



*Butchart Gardens (40 min drive)*



*The Legislative Buildings (5 min walk)*



*Historic China Town (15-20 min walk)*

For more information on tourist attractions, Victoria climate and history please visit: <http://www.victoria.ca/visitors/about.shtml>

## Getting Here

Located on the southern tip of Vancouver Island, Victoria can be as much fun to get to as it is to explore once you are here. A little planning will make your journey more interesting.

<http://www.tourismvictoria.com>

## Accommodation

We have blocked 70 rooms in the **Hotel Grand Pacific**, the conference venue. When you book the hotel, please make yourself known as a participant at the Academy of Aphasia. The reservation number is **1-800-663-7550**.

Room Type	Sat 14	Sun 15	Mon 16	Tue 17	Rate CDN \$/ night
Victoria/Grand Rooms	25	25	25	C/ O	\$169/night + taxes Sgl or dbl occupancy <b>Complimentary Parking Complimentary High Speed Internet</b>

Harbour View Rooms	40	40	40	C/ O	\$199/night + taxes Sgl or dbl occupancy <b>Complimentary Parking</b> <b>Complimentary High Speed Internet</b>
Harbour View One Bedroom Suites	5	5	5	C/ O	\$199/night + taxes Sgl or dbl occupancy <b>Complimentary Parking</b> <b>Complimentary High Speed Internet</b> <b>Complimentary Upgrade</b>
<b>Total rooms</b>	<b>70</b>	<b>70</b>	<b>70</b>		

Extra Person Charge = \$30.00

The guest room rates outlined above are quoted in Canadian dollars, and exclude applicable taxes (7% GST and 10% Hotel Tax).

### ***CUT-OFF DATE***

The cut-off date for reservations is 30 days prior to arrival. All rooms in the group block that have not been picked up by this date will be released for general sale to the hotel. Reservation requests received after the cut-off date will be accepted on a space available basis at the selling rate.

The hotel will provide rooms at the rate we have established, for three days prior to the meeting and for three days after the meeting, based on availability. It is probably advisable to make your reservations very soon and at the latest by the end of August. Let the reservation agent know that you are part of the Academy of Aphasia meeting.

### ***CHECK-IN/ CHECK-OUT***

Check in time is 3:00 pm. The Hotel will make all reasonable efforts to accommodate early arrivals. Check-out time is 11:00 am.



**Hotel Grand Pacific**  
463 Belleville St.  
Victoria, British Columbia  
Canada  
**1-800-663-7550**  
reserve@hotelgrandpacific.com

## **EVENING DINING**



The Hotel Grand Pacific itself has many options for dinner:  
The Pacific Restaurant  
The Pacific Lounge  
Courtyard Café  
24 hour room service

In addition, there are many lovely restaurants within walking distance of the Hotel Grand Pacific. Take a stroll with friends or colleagues:

## ***FINE DINING***



## **Gatsby Mansion Inn and Restaurant**

309 Belleville Street  
1 (800) 563-9656  
<http://www.bellevillepark.com/Gatsby.html>

West Coast Fusion; hearty food that looks delicious, with a taste you'll savour, and made from ingredients so fresh and healthy, your doctor may well be tempted to prescribe it.  
5 min walk

## **Il Terrazo**

555 Johnson Street, 250-361-0028

Great Italian food and West Coast seafood in Old Town courtyard setting. One of the best Italian restaurants in North America.

*15-20 min walk*



## **Cafe Brio**

944 Fort Street,

1-866-270-5461

West Coast contemporary with a Tuscan flair in this Italian villa-style building.

*"Cafe Brio, the hottest restaurant in Victoria, is a destination for serious diners from all over the U.S. and Canada. Dedicated to promoting the cuisine of Vancouver Island" writes Northwest Palate Magazine.*

<http://www.cafe-brio.com/>

*30 min walk or \$7-10 cab fare*



## **Brasserie "l'école"**

1715 Government St

(250) 475 6260

[eat@lecole.ca](mailto:eat@lecole.ca)

This small French bistro has won numerous awards and accolades. Brasserie "L'école" has been recommended by media such as the New York Times (June 11, 2004), Martha Stewart Weddings (Spring 2002), Travel & Leisure (June 2003), Conde Nast Traveler and National Geographic Traveler (September 2005).

*20 min walk or \$5-8 cab fare*

## **Camilles Restaurant**



45 Bastion Square  
Fine west coast dining in a casual atmosphere.  
<http://www.camillesrestaurant.com/>  
*10-15 min walk*

## **CASUAL**

### **Ferris's Oyster Bar and Grill**

536 Yates St.  
(250) 360-1824.

Oysters, sandwiches, salads and pasta in a small, friendly, brick-walled room straight out of Greenwich Village.

Dinner entrees, \$14-\$18 CDN  
*15 min walk*

### **ReBar Modern Cuisine**

50 Bastion Square  
(250) 361-9223

<http://www.rebarmodernfood.com/>

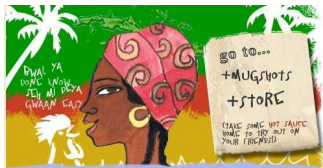
Vegetarian West Coast Dining. Has a juice bar and bakery. \$7-\$24 CDN  
*15 min walk*



### **Pagliacci's**

1011 Broad Street  
386-1662

Casual Italian Dining. \$7.50-\$18 CDN  
*10-15 min walk*



### **The Reef**

533 Yates Street  
250-388-5375

Caribbean Cuisine. \$9-\$17 CDN  
*15 min walk*

